



Introduction to ISIS

ISP/IXP Workshops

IS-IS Standards History

- ISO 10589 specifies OSI IS-IS routing protocol for CLNS traffic
 - Tag/Length/Value (TLV) options to enhance the protocol
 - A Link State protocol with a 2 level hierarchical architecture.
- RFC 1195 added IP support
 - I/IS-IS runs on top of the Data Link Layer
 - Requires CLNP to be configured
- RFC5308 adds IPv6 address family support to IS-IS
- RFC5120 defines Multi-Topology concept for IS-IS
 - Permits IPv4 and IPv6 topologies which are not identical

ISIS Levels

- ISIS has a 2 layer hierarchy

- Level-2 (the backbone)

- Level-1 (the areas)

- A router can be

- Level-1 (L1) router

- Level-2 (L2) router

- Level-1-2 (L1L2) router

ISIS Levels

- Level-1 router

- Has neighbours only on the same area

- Has a level-1 LSDB with all routing information for the area

- Level-2 router

- May have neighbours in the same or other areas

- Has a Level-2 LSDB with all routing information about inter-area

- Level-1-2 router

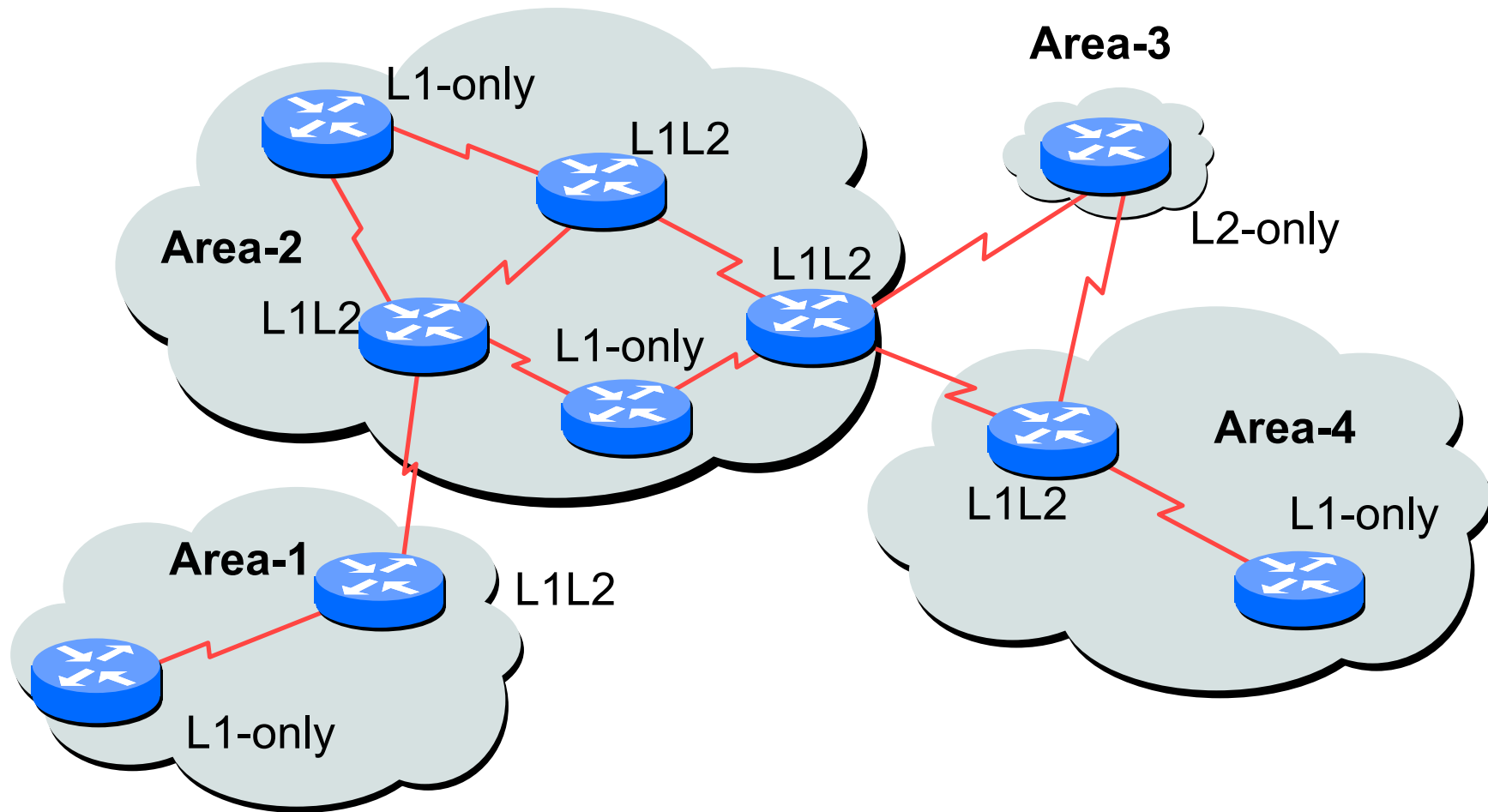
- May have neighbours on any area.

- Has two separate LSDBs: level-1 LSDB & level-2 LSDB

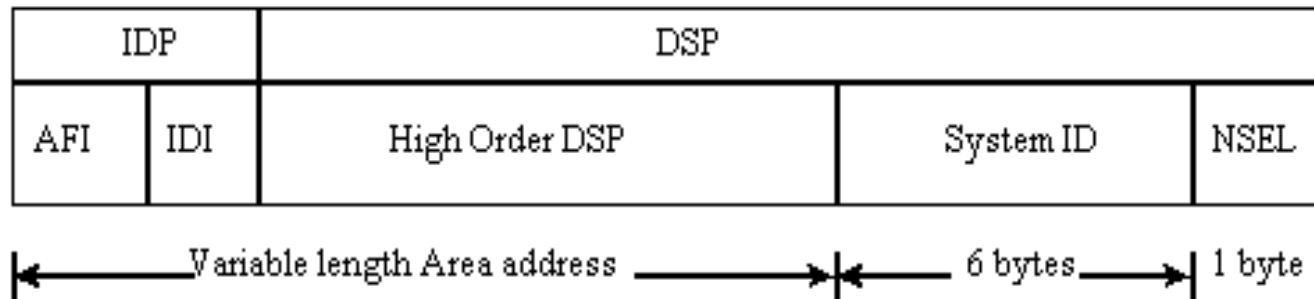
Backbone & Areas

- ISIS does not have a backbone area as such (like OSPF)
- Instead the backbone is the contiguous collection of Level-2 capable routers
- ISIS area borders are on links, not routers
- Each router is identified with Network Entity Title (NET)
NET is an NSAP where the n-selector is 0

L1, L2, and L1L2 Routers

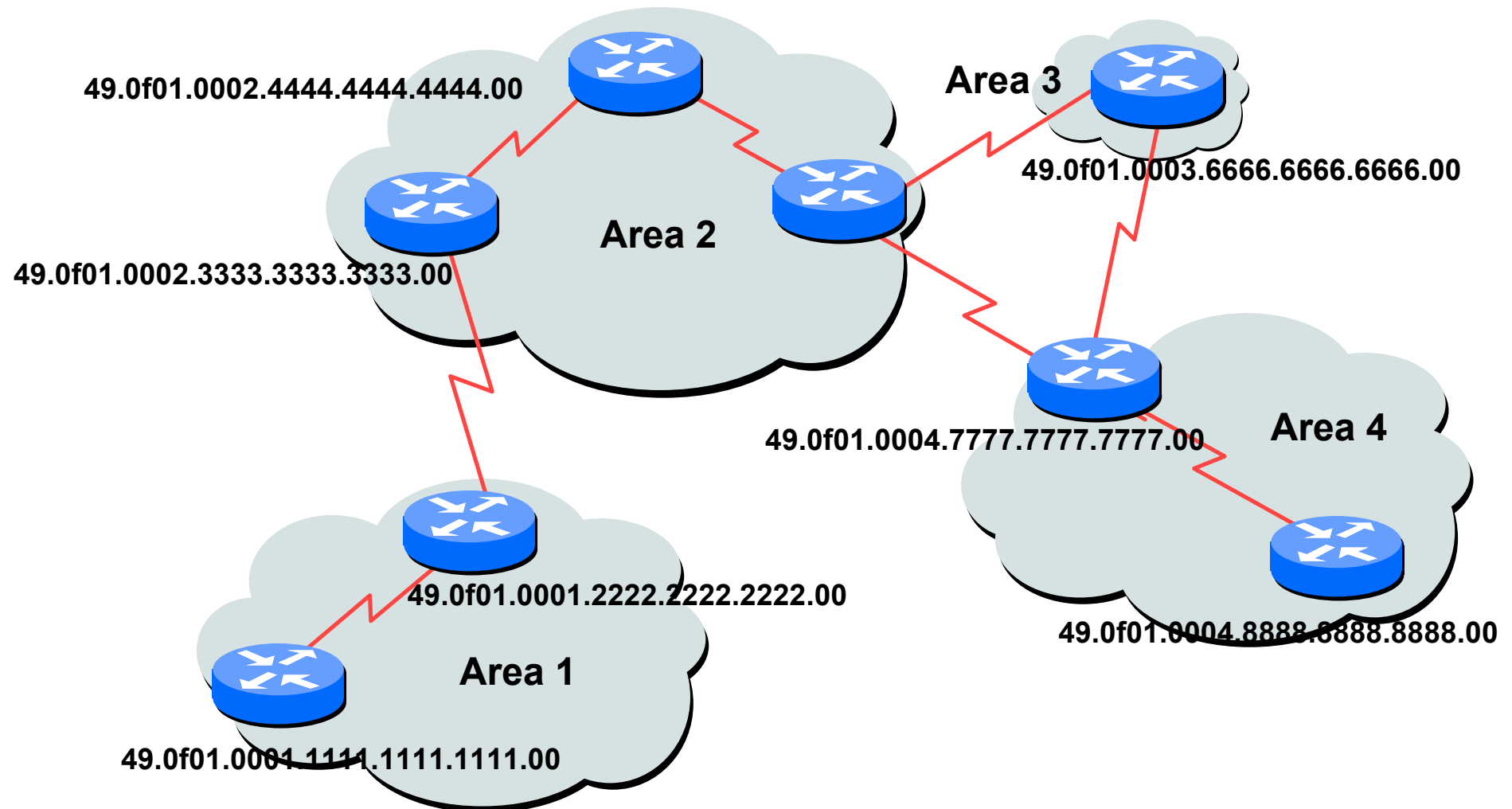


NSAP and Addressing



- NSAP: Network Service Access Point
 - Total length between 8 and 20 bytes
 - Area Address: variable length field (up to 13 bytes)
 - System ID: defines an ES or IS in an area.
 - NSEL: N-selector. identifies a network service user (transport entity or the IS network entity itself)
- NET: the address of the network entity itself

An Addressing Example



Addressing Common Practices

- ISPs typically choose NSAP addresses thus:

First 8 bits – pick a number (usually 49)

Next 16 bits – area

Next 48 bits – router loopback address

Final 8 bits – zero

- Example:

NSAP: 49.0001.1921.6800.1001.00

Router: 192.168.1.1 (loopback) in Area 1

Adjacencies

- Hello PDU IIHs are exchanged between routers to form adjacencies



- Area addresses are exchanged in IIH PDUs

Link State PDU (LSP)

- Each router creates an LSP and flood it to neighbours
- A level-1 router will create level-1 LSP(s)
- A level-2 router will create level-2 LSP(s)
- A level-1-2 router will create
level-1 LSP(s) and
level-2 LSP(s)

LSP Header

- LSPs have
 - Fixed header
 - TLV coded contents
- The LSP header contains
 - LSP-id
 - Sequence number
 - Remaining Lifetime
 - Checksum
 - Type of LSP (level-1, level-2)
 - Attached bit
 - Overload bit

LSP Contents

- The LSP contents are coded as TLV (Type, Length, Value)
 - Area addresses
 - IS neighbors
 - Authentication Info

LSDB content

- Each router maintains a separate LSDB for level-1 and level-2 LSPs
- LSP headers and contents
- SRM bits: set per interface when router has to flood this LSP
- SSN bits: set per interface when router has to send a PSNP for this LSP

Flooding of LSPs

- New LSPs are flooded to all neighbors
- It is necessary that all routers get all LSPs
- Each LSP has a sequence number
- 2 kinds of flooding
 - Flooding on a p2p link
 - Flooding on LAN

Flooding on a p2p link

- Once the adjacency is established both routers send CSNP packet
- Missing LSPs are sent by both routers if not present in the received CSNP
- Missing LSPs may be requested through PSNP

Flooding on a LAN

- There's a Designated Router (DIS)
- DIS election is based on priority
 - Best practice is to select two routers and give them higher priority – then in case of failure one provides deterministic backup to the other
- Tie break is by the highest MAC address
- DIS has two tasks
 - Conducting the flooding over the LAN
 - Creating and updating a special LSP describing the LAN topology (Pseudonode LSP)
- Pseudonode represents LAN (created by the DIS)

Flooding on a LAN

- DIS conducts the flooding over the LAN
- DIS multicasts CSNP every 10 seconds
- All routers in the LAN check the CSNP against their own LSDB (and may ask specific re-transmissions with PSNPs)

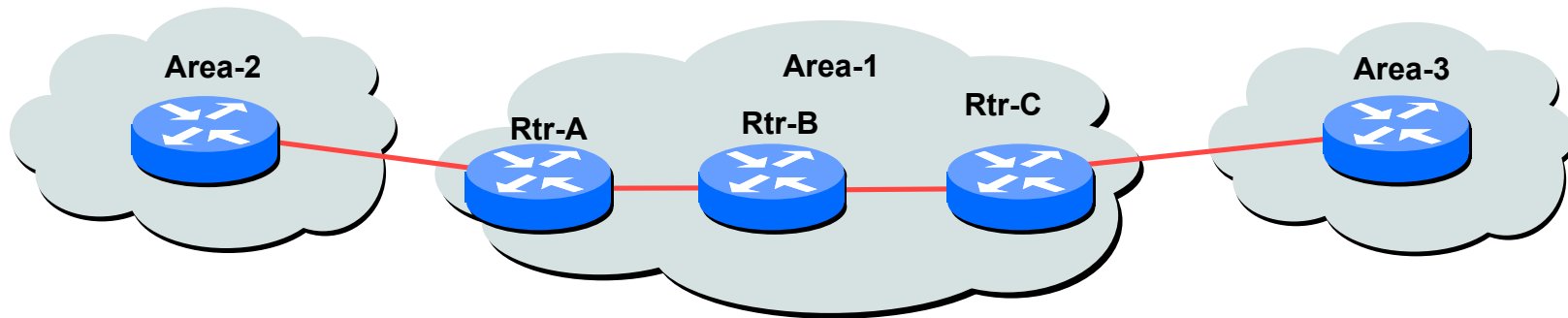
Complete Sequence Number PDU

- Describes all LSPs in your LSDB (in range)
- If LSDB is large, multiple CSNPs are sent
- Used at 2 occasions
 - Periodic multicast by DIS (every 10 seconds) to synchronise LSDB over LAN subnets
 - On p2p links when link comes up

Partial Sequence Number PDUs

- PSNPs Exchanged on p2p links (ACKs)
- Two functions
 - Acknowledge receipt of an LSP
 - Request transmission of latest LSP
- PSNPs describe LSPs by its header
 - LSP identifier
 - Sequence number
 - Remaining lifetime
 - LSP checksum

Configuration



- L1, L2, L1-L2

By default cisco routers will be L1L2 routers

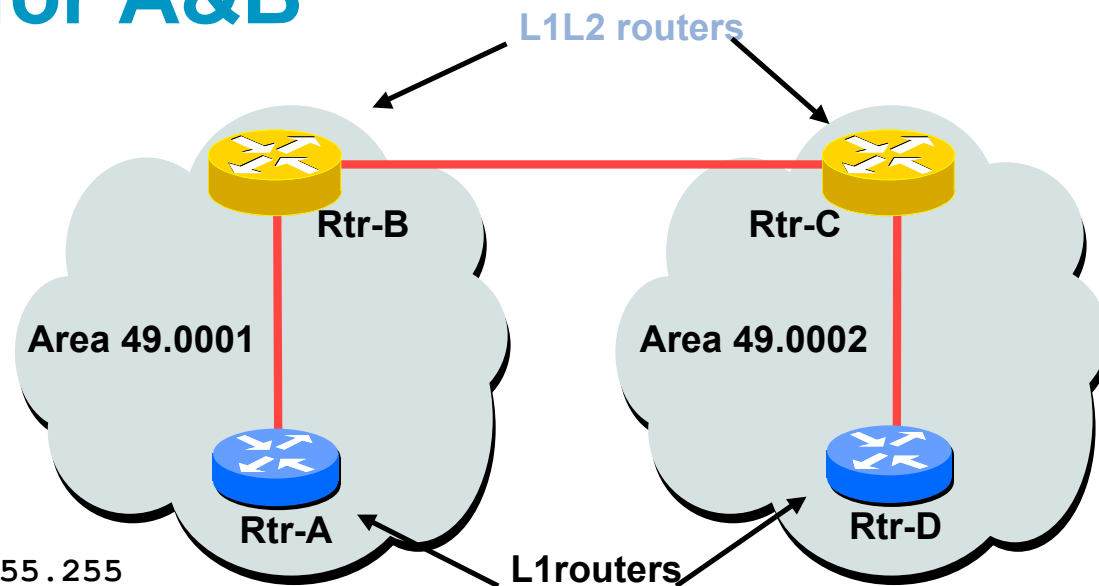
Routers can be manually configured to behave as

Level-1 only, Level-2 only, Level-1-2

This is what most ISPs do

Configuration can be done per interface or at the router level

Configuration for A&B



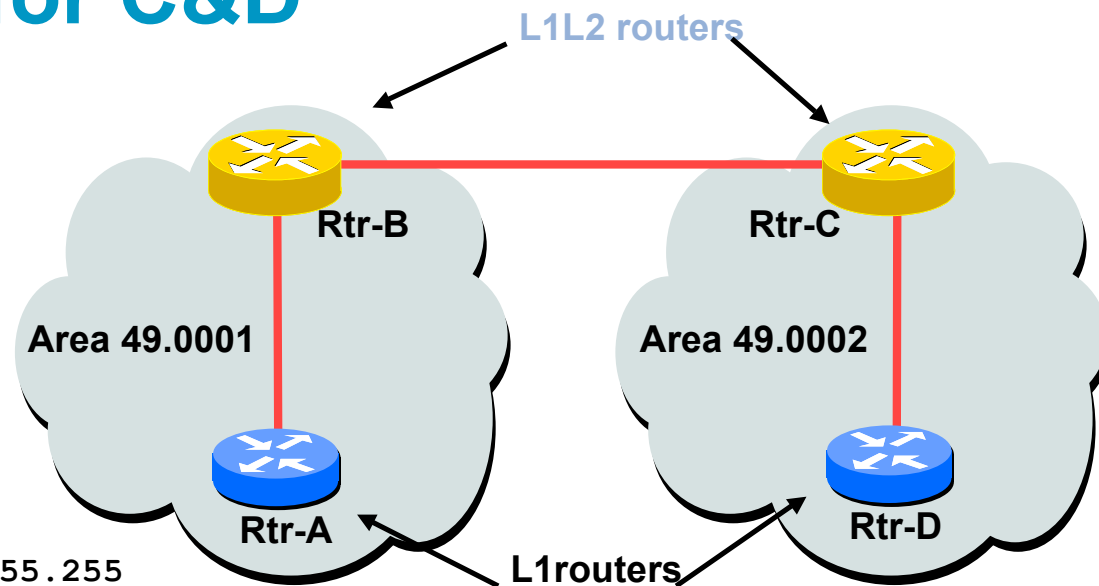
Router-B

```
interface Loopback0
  ip address 192.168.1.1 255.255.255.255
!
Interface Pos2/0/0
  ip address 192.168.222.1 255.255.255.0
  ip router isis
  isis circuit-type level-2
!
FastEthernet4/0/0
  ip address 192.168.120.10 255.255.255.0
  ip router isis
  isis circuit-type level-1
!
router isis
  passive-interface Loopback0
  net 49.0001.1921.6800.1001.00
```

Router-A

```
interface Loopback0
  ip address 192.168.1.5 255.255.255.255
!
interface FastEthernet0/0
  ip address 192.168.120.5 255.255.255.0
  ip router isis
!
router isis
  is-type level-1
  passive-interface Loopback0
  net 49.0001.1921.6800.1005.00
```

Configuration for C&D



Router-C

```
interface Loopback0
  ip address 192.168.2.2 255.255.255.255
!
Interface Pos1/0/0
  ip address 192.168.222.2 255.255.255.0
  ip router isis
  isis circuit-type level-2
!
interface Fddi3/0
  ip address 192.168.111.2 255.255.255.0
  ip router isis
  isis circuit-type level-1
!
router isis
  passive-interface Loopback0
  net 49.0002.1921.6800.2002.00
```

Router-D

```
interface Loopback0
  ip address 192.168.2.4 255.255.255.255
!
interface Fddi6/0
  ip address 192.168.111.4 255.255.255.0
  ip router isis
!
router isis
  is-type level-1
  passive-interface Loopback0
  net 49.0002.1921.6800.2004.00
```

Adding interfaces to ISIS

- To activate ISIS on an interface:

```
interface HSSI 4/0
  ip route isis isp-bb
  isis circuit-type level-2
```

- To disable ISIS on an interface:

```
router isis isp-bb
  passive-interface GigabitEthernet 0/0
```

Disables CLNS on that interface

Puts the interface subnet address into the LSDB

- No ISIS configuration on an interface

No CLNS run on interface, no interface subnet in the LSDB

Adding interfaces to ISIS

- **Scaling ISIS: `passive-interface default`**

Disables ISIS processing on all interfaces apart from those marked as no-passive

Places all IP addresses of all connected interfaces into ISIS

Must be at least one non-passive interface:

```
router isis isp-bb
  passive-interface default
  no passive-interface GigabitEthernet 0/0
interface GigabitEthernet 0/0
  ip router isis isp-bb
  isis metric 1 level-2
```

Status Commands in ISIS

- Show clns

Shows the global CLNS status as seen on the router, e.g.

```
Rtr-B>show clns
```

```
Global CLNS Information:
```

```
  2 Interfaces Enabled for CLNS
```

```
NET: 49.0001.1921.6800.1001.00
```

```
Configuration Timer: 60, Default Holding Timer: 300, Packet  
Lifetime 64
```

```
ERPDUs requested on locally generated packets
```

```
Intermediate system operation enabled (forwarding allowed)
```

```
IS-IS level-1-2 Router:
```

```
  Routing for Area: 49.0001
```

Status Commands in ISIS

- Show clns neighbors

Shows the neighbour adjacencies as seen by the router:

```
Rtr-B> show clns neighbors
```

System Id	SNPA	Interface	State	Holdtime	Type	Protocol
1921.6800.2002	*PPP*	PO2/0/0	Up	29	L2	IS-IS
1921.6800.1005	00e0.1492.2c00	Fa4/0/0	Up	9	L1	IS-IS

More recent IOSes replace system ID with router
hostname – ease of troubleshooting

Status Commands in ISIS

- Show clns interface

Shows the CLNS status on a router interface:

```
Rtr-B> show clns interface POS2/0/0
POS2/0/0 is up, line protocol is up
  Checksums enabled, MTU 4470, Encapsulation PPP
  ERPDUs enabled, min. interval 10 msec.
  RDPDUs enabled, min. interval 100 msec., Addr Mask enabled
Congestion Experienced bit set at 4 packets
DEC compatibility mode OFF for this interface
Next ESH/ISH in 47 seconds
Routing Protocol: IS-IS
  Circuit Type: level-1-2
  Interface number 0x0, local circuit ID 0x100
  Level-1 Metric: 10, Priority: 64, Circuit ID: 1921.6800.2002.00
  Number of active level-1 adjacencies: 0
  Level-2 Metric: 10, Priority: 64, Circuit ID: 1921.6800.1001.00
  Number of active level-2 adjacencies: 1
  Next IS-IS Hello in 2 seconds
```

Status Commands in ISIS

- Show CLNS protocol

Displays the status of the CLNS protocol on the router:

```
Rtr-B> show clns protocol
IS-IS Router: <Null Tag>
  System Id: 1921.6800.1001.00  IS-Type: level-1-2
  Manual area address(es):
    49.0001
  Routing for area address(es):
    49.0001
  Interfaces supported by IS-IS:
    FastEthernet4/0/0 - IP
    POS2/0/0 - IP
  Redistributing:
    static
  Distance: 110
```

Other status commands

- “show clns traffic”

Shows CLNS traffic statistics and activity for the network

- “show isis database”

Shows the ISIS link state database

i.e. the “routing table”

Network Design Issues

- As in all IP network designs, the key issue is the addressing lay-out
- ISIS supports a large number of routers in a single area
- When using areas, use summary-addresses
- >400 routers in the backbone is quite doable

Network Design Issues

- Possible link cost
 - Default on all interface is 10
 - (Compare with OSPF which set cost according to link bandwidth)
 - Manually configured according to routing strategy
- Summary address cost
 - Equal to the best more specific cost
 - Plus cost to reach neighbor of best specific
- Backbone has to be contiguous
 - Ensure continuity by redundancy
- Area partitioning
 - Design so that backbone can **NOT** be partitioned

Scaling Issues

- Areas vs. single area

- Use areas where

- sub-optimal routing is not an issue

- areas with one single exit point

- Start with L2-only everywhere is a good choice

- Future implementation of level-1 areas will be easier

- Backbone continuity is ensured from start

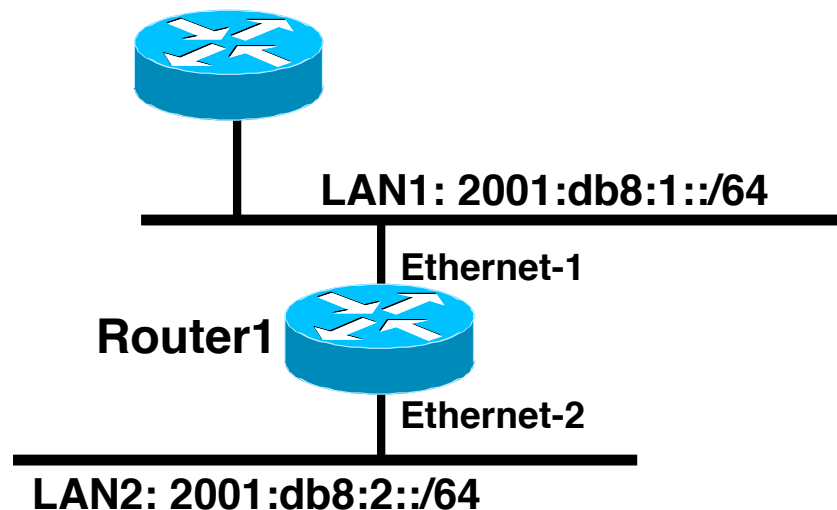


ISIS for IPv6

IS-IS for IPv6

- 2 Tag/Length/Values added to introduce IPv6 routing
- IPv6 Reachability TLV (0xEC)
 - External bit
 - Equivalent to IP Internal/External Reachability TLV's
- IPv6 Interface Address TLV (0xE8)
 - For Hello PDUs, must contain the Link-Local address
 - For LSP, must only contain the non-Link Local address
- IPv6 NLPID (0x8E) is advertised by IPv6 enabled routers

IOS IS-IS dual IP configuration



Dual IPv4/IPv6 configuration.
Redistributing both IPv6 static routes
and IPv4 static routes.

```
Router1#
interface ethernet-1
 ip address 10.1.1.1 255.255.255.0
 ipv6 address 2001:db8:1::1/64
 ip router isis
 ipv6 router isis

interface ethernet-2
 ip address 10.2.1.1 255.255.255.0
 ipv6 address 2001:db8:2::1/64
 ip router isis
 ipv6 router isis

router isis
 address-family ipv6
  redistribute static
 exit-address-family
 net 49.0001.0000.0000.072c.00
 redistribute static
```

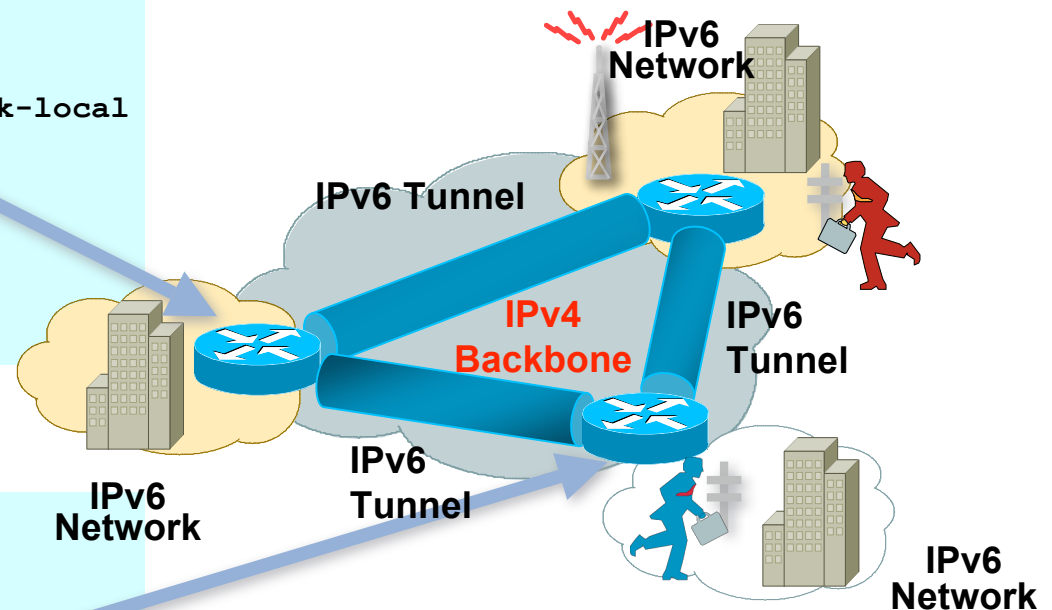
IOS Configuration for IS-IS for IPv6 on IPv6 Tunnels over IPv4

On Router1:

```
interface Tunnel0
  no ip address
  ipv6 address 2001:db8:1::1/64
  ipv6 address FE80::10:7BC2:ACC9:10 link-local
  ipv6 router isis
  tunnel source 10.42.1.1
  tunnel destination 10.42.2.1
!
router isis
  net 49.0001.0000.0000.0001.00
```

On Router2:

```
interface Tunnel0
  no ip address
  ipv6 address 2001:db8:1::2/64
  ipv6 address FE80::10:7BC2:B280:11 link-local
  ipv6 router isis
  tunnel source 10.42.2.1
  tunnel destination 10.42.1.1
!
router isis
  net 49.0001.0000.0000.0002.00
```



IS-IS for IPv6 on an IPv6 Tunnel requires GRE Tunnel; it can't work with IPv6 configured tunnel as IS-IS runs directly over the data link layer

Multi-Topology IS-IS extensions

- IS-IS for IPv6 assumes that the IPv6 topology is the same as the IPv4 topology
 - Single SPF running, multiple address families
 - Some networks may be like this, but many others are not
- Multi-Topology IS-IS solves this problem
 - New TLV attributes introduced
 - New Multi-Topology ID #2 for IPv6 Routing Topology
 - Two topologies now maintained:
 - ISO/IPv4 Routing Topology (MT ID #0)
 - IPv6 Routing Topology (MT ID #2)

Multi-Topology IS-IS extensions

- New TLVs attributes for Multi-Topology extensions:

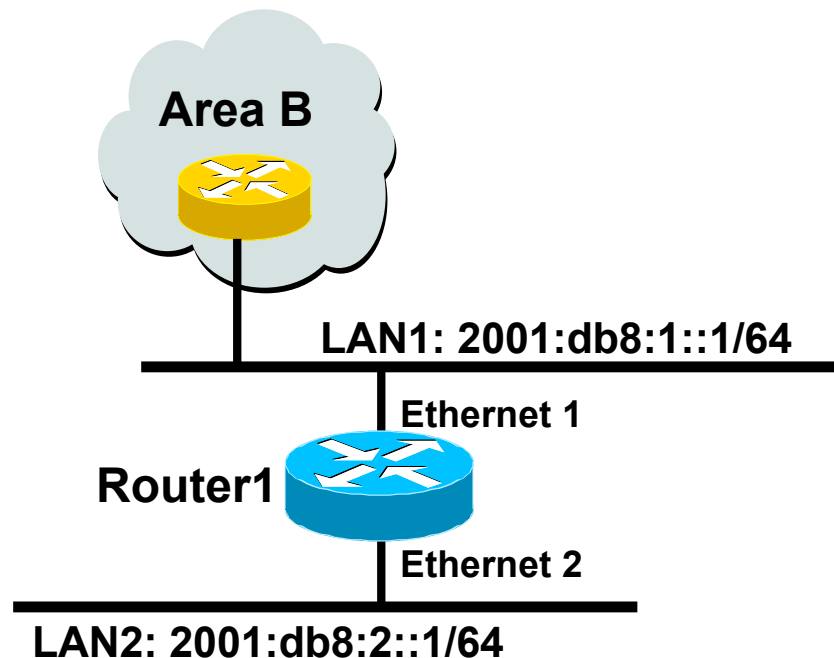
Multi-topology TLV: contains one or more multi-topology ID in which the router participates

MT Intermediate Systems TLV: this TLV appears as many times as the number of topologies a node supports

Multi-Topology Reachable IPv4 Prefixes TLV: this TLV appears as many times as the number of IPv4 announced by an IS for a given MT ID

Multi-Topology Reachable IPv6 Prefixes TLV: this TLV appears as many times as the number of IPv6 announced by an IS for a given MT ID

Multi-Topology ISIS configuration example (IOS)



- The optional keyword **transition** may be used for transitioning existing IS-IS IPv6 single SPF mode to MT IS-IS
- Wide metric is mandated for Multi-Topology to work

```
Router1#  
interface Ethernet 1  
  ip address 10.1.1.1 255.255.255.0  
  ipv6 address 2001:db8:1::1/64  
  ip router isis  
  ipv6 router isis  
  isis ipv6 metric 20  
  
interface Ethernet 2  
  ip address 10.2.1.1 255.255.255.0  
  ipv6 address 2001:db8:2::1/64  
  ip router isis  
  ipv6 router isis  
  isis ipv6 metric 20  
  
router isis  
  net 49.0001.0000.0000.072c.00  
  metric-style wide  
  !  
  address-family ipv6  
    multi-topology  
  exit-address-family
```


ISP common practices

- NSAP address construction
 - Area and loopback address
- L2
 - L1-L2 and L1 used later for scaling
- Wide metrics
 - Narrow metrics are too limiting
- Deploying IPv6 in addition to IPv4
 - Multi-topology is recommended – gives increased flexibility should there be future differences in topology



ISP Best Practices

Extra detailed information

ISIS neighbour authentication

- Create key chains to be used for HMAC-MD5 authentication for both Level-1 and Level-2

```
key chain isis-sec-l1
```

```
key 1
```

```
key-string xxxxx
```

```
key chain isis-sec-l2
```

```
key 1
```

```
key-string xxxxx
```

Setting up Loopback Interface

- Create the Loopback interface/Router-ID

It will NOT have IS-IS running on it because it is not a transit interface

Disabling IS-IS on it, while announcing the IP prefixes into IS-IS, allows the IS-IS domain to scale because LSP/Hello packets are not unnecessarily generated for the Loopback interface

An IS-IS metric will NOT be set, which will default the Loopback interface's metric to zero (0).

```
interface loopback0
  ip address 192.168.0.1 255.255.255.255
  ipv6 address 2001:db8:192:168:0:1/128
```

Level-1 Interface Configuration

- Configure addresses and enable ISIS for IPv4 and IPv6

```
interface gigabitethernet0/1
  ip address 192.168.1.1 255.255.255.192
  ipv6 address 2001:db8:192:168:1:1/112
  !
  ip router isis 1
  ipv6 router isis 1
```

- Ensure this interfaces runs at Level-1

```
isis circuit-type level-1
```

Level-1 Interface: Metrics & Auth

- Set the costs for IPv4 and IPv6

```
interface gigabitethernet0/1
  isis metric 400 level-1
  isis ipv6 metric 400 level-1
```

- Enable HMAC-MD5 for level-1

```
isis authentication mode md5 level-1
```

- Associate the key-chain defined earlier

```
isis authentication key-chain isis-sec-11 level-1
```

Level-1 Interface: DIS and BFD

- Set this IS to be the DIS in this Level-1 area

A DIS of 126 (higher than the default of 64) configured on another IS in this area sets it up as the backup DIS

```
interface gigabitethernet0/1
  isis priority 127 level-1
```

- Enable BFD for fast failure detection

BFD helps reduce the convergence times of IS-IS because link failures will be signalled much quicker

```
interface gigabitethernet0/1
  bfd interval 250 min_rx 250 multiplier 3
```

Level-2 interface

- This interface is used for a trunk link to another PoP forming part of your network-wide backbone

As such it will be a Level-2 interface, making this router a Level-1/Level-2 IS.

Metric and authentication are all configured for Level-2

```
interface gigabitethernet0/2
  ip address 192.168.2.1 255.255.255.252
  ipv6 address 2001:db8:192:168:2:1:/126
  ip router isis 1
  ipv6 router isis 1
  isis circuit-type level-2-only
  isis metric 400 level-2
  isis ipv6 metric 400 level-2
  isis authentication mode md5 level-2
  isis authentication key-chain isis-sec-12 level-2
```


Level 2 interface: more details

- To make this IS-IS BCP more interesting, we will assume this trunk link is a broadcast multi-access link, i.e., Ethernet.
- As this is an Ethernet interface, IS-IS will attempt to elect a DIS when it forms an adjacency

Because it is running as a point-to-point WAN link, with only 2 IS's on the wire, configuring IS-IS to operate in "point-to-point mode" scales the protocol by reducing the link failure detection times

Point-to-point mode improves convergence times on Ethernet networks because it:

- Prevents the election of a DIS on the wire,

- Prevents the flooding process from using CSNP's for database synchronization

- Simplifies the SPF computations and reduces the IS's memory footprint due to a smaller topology database.

```
int gi0/2
```

```
isis network point-to-point
```

ISP Best Practices

- We now configure parameters specific to the IS-IS routing protocol

This covers both IPv4 and IPv6, as IS-IS supports both IP protocols in the same implementation

```
router isis 1
```

- Create an NET

This is made up of a private AFI (49), an area part, a System ID (taken from the padded **Loopback interface IP address**) and an N-SEL of zero (0).

```
net 49.0001.1921.6800.0001.00
```

- Enable HMAC-MD5 authentication

```
authentication mode md5
```

```
authentication key-chain isis-sec-11 level-1
```

```
authentication key-chain isis-sec-12 level-2
```

ISP Best Practices

- Enable iSPF (incremental SPF).

This, in the long run, reduces CPU demand because SPF calculations are run only on the affected changes in the SPT.

As this is a Level-1/Level-2 router, enable iSPF at both levels 60 seconds after the command has been entered into the configuration.

Note that IOS only supports iSPF for IPv4.

```
ispf level-1-2 60
```

- Enable wide/extended metric support for IS-IS.

IOS, by default, supports narrow metrics, which means you can define cost values between 1-63. This is not scalable.

To solve this problem, enable wide metrics, which allows you to define cost values between 1-16777214.

```
metric-style wide
```

ISP Best Practices

- Increase ISIS default metric

Default value is 10

All interfaces in both L1 and L2 have this value

Not useful if configured value is “accidentally” removed - a low priority interface could end up taking full load by mistake

Configure a “very large” value as default

metric 100000

- Disable IIH padding because on high speed links, it may strain huge buffers; and on low speed links, it may waste bandwidth and affect other time sensitive applications, e.g., voice.

Disabling IIH padding is safe because IOS will still pad the first 5 IIH's to the full MTU to aid in the discovery of MTU mismatches.

no hello padding

ISP Best Practices

- Allow the Loopback interface IP address to be carried within IS-IS, while preventing it from being considered in the flooding process.

passive-interface Loopback0

- Log changes in the state of the adjacencies.

log-adjacency-changes

- Tell the IS to ignore LSP's with an incorrect data-link checksum, rather than purge them

Purging LSP's with a bad checksum causes the initiating IS to regenerate that LSP, which could overload the IS if perpetuated in a cycle

So rather than purge them, ignore them.

ignore-lsp-errors

ISP Best Practices

- Reduce the amount of control traffic, conserving CPU usage for generation and refreshing of LSP's.

Do this by increasing the LSP lifetime to its limits.

```
max-lsp-lifetime 65535
```

- Reduce the frequency of periodic LSP flooding of the topology, which reduces link utilization

This is safe because there other mechanisms to guard against persistence of corrupted LSP's in the LSDB.

```
lsp-refresh-interval 65000
```

- Customize IS-IS throttling of SPF calculations.

Good for when you also use BFD for IS-IS.

These are recommended values for fast convergence.

```
spf-interval 5 1 20
```

ISP Best Practices

- Customize IS-IS throttling of PRC calculations.

PRC calculates routes without performing a full SFP calculation.

This is done when a change is signaled by another IS, but without a corresponding change in the basic network topology, e.g., the need to reinstall a route in the IS-IS RIB.

These are recommended values for fast convergence.

```
prc-interval 5 1 20
```

- Customize IS-IS throttling of LSP generation.

These are recommended values for fast convergence.

```
lsp-gen-interval 5 1 20
```

ISP Best Practices

- Enable IS-IS fast-flooding of LSP's.

This tells the IS to always flood the LSP that triggered an SPF before the router actually runs the SPF computation.

This command used to be 'ip fast-convergence' and has since been replaced from IOS 12.3(7)T.

Below, we shall tell the IS to flood the first 10 LSP's which invoke the SPF before the SPF computation is started

```
fast-flood 10
```

- Enable IS-IS IETF Graceful Restart.

This ensures an IS going through a control plane switchover continues to forward traffic as if nothing happened

Software and platform support is limited, so check whether your particular platform/code supports this

Also, deploy only if it's necessary.

```
nsf ietf
```


ISP Best Practices

- Enable BFD support for IS-IS.

With BFD running on the interface, a failure of the link would signal IS-IS immediately

IS-IS will then converge accordingly.

bfd all-interfaces

- Tell IS-IS to ignore the attached bit

The Attached bit is set when an L1/L2 IS learns L1 routes from other L1 routers in the same area

The Attached bit causes the installation of an IS-IS-learned default route in the IS-IS RIB on L1 routers in the same area, as well as in the forwarding table if IS-IS is the best routing protocol from which the default route was learned – this can lead to suboptimal routing.

ignore-attached-bit

ISP Best Practices

- Wait until iBGP is running before providing transit path

set-overload-bit on-startup wait-for-bgp

Avoids blackholing traffic on router restart

Causes ISIS to announce its prefixes with highest possible metric until iBGP is up and running

When iBGP is running, ISIS metrics return to normal, make the path valid

- Enable the IPv6 address family for in IS-IS.

address-family ipv6

- Enable multi-topology support for IPv6 in IS-IS.

Multi-topology support allows the IPv4 topology to be independent of that of IPv6

multi-topology

ISP Best Practices

- Things to consider on routers operating as Level-1-only IS's:

IS-IS BCP techniques under the IS-IS routing process

In addition to the interface, tell the IS-IS routing process to operate in a Level-1 area only

```
router isis 1
  is-type level-1
```

ISP Best Practices

- Things to consider on routers operating as Level-1 and Level-2 IS's:

To prevent sub-optimal routing of traffic from L1 IS's in one area to L1 IS's in another area, configure and enable Route Leaking on L1/L2 routers that form the backbone connectivity between two or more different areas

Route Leaking permits L1/L2 routers to install L1 routes learned from one area into L1 IS's routing/forwarding tables in another area

This allows for reachability between L1 routers located behind L1/L2 routers in different areas

```
router isis 1
  redistribute isis ip level-2 into level-1 route-map FOO
!
ip prefix-list foo permit 0.0.0.0/0 le 32
!
route-map FOO permit 10
  match ip address prefix-list foo
```

ISP Best Practices

- Summary

Best practice recommendations are commonly implemented on many ISP backbones

Ensures efficient and scalable operation of ISIS



Introduction to ISIS

ISP/IXP Workshops